

Collection 2023

selle
sanmarco

The logo graphic consists of a blue swoosh above a black swoosh, both pointing to the right.

#amatterofride's



#amatterofriders

Values that describe Selle San Marco

Adventure,
emotion,
sharing!

These are the values that rewrite the history of Selle San Marco.

A new journey to discover cycling and the emotions that only this sport can transmit.

Because our emotion in creating saddles comes from your emotion in living experiences.

Questi sono i valori che riscrivono la storia di Selle San Marco.

Un nuovo viaggio alla scoperta del ciclismo e delle emozioni che solo questo sport può trasmettere.

Perché la nostra emozione nel creare selle nasce dalla tua emozione nel vivere esperienze.

Index

06.

Talking about saddles

10.

Technologies

14.

Shortfit

22.

Aspide

30.

Allroad

34.

Ground

38.

Bottega

44.

Bioaktive

64.

Accessories



Saddle ergonomics

The saddle is one of the most important accessories for a cyclist, and not just because it is one of the 3 contact points between their body and the bicycle. It is essential to choose a saddle that best suits your body structure, in order to be able to pedal comfortably and efficiently, whilst also avoiding any irritating discomfort. In fact, if the same athlete were to ride on different saddles, completely different contact pressures would be produced on each saddle.

In order to find the ideal saddle, the following factors should especially be taken into consideration:

- The morphology of the support points (i.e. the ischial tuberosities)
- The leg muscles
- Pelvis flexibility.

The combination of these 3 factors, will enable you to find the type of saddle most suited to your needs.

Selle San Marco is not only able to offer the best option for every body type, but also has the right tools to analyse the body structure of each user and therefore, better indicate the available options, according to these parameters:

- Saddle width (wide or narrow)
- The presence or absence of the central cut-out and its width.

La sella è uno degli accessori più importanti per un ciclista, e non solo perché è uno dei 3 punti di contatto tra corpo umano e bicicletta. La scelta della sella più congeniale alle proprie caratteristiche fisiche è fondamentale per poter pedalare in modo confortevole e performante, evitando altresì fastidiosi dolori. Uno stesso atleta che pedala su selle diverse infatti, può generare delle pressioni di contatto completamente differenti tra loro.

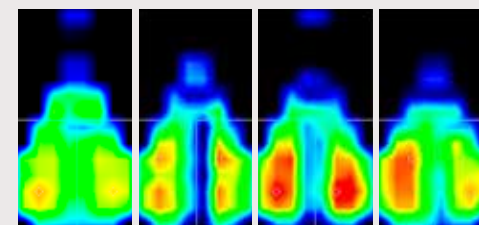
Per poter individuare la sella ideale è necessario analizzare in particolare:

- la morfologia dei punti di appoggio (ossia ischiatiche)
- la muscolatura delle gambe
- la flessibilità del bacino

La combinazione di questi 3 fattori permette di individuare la tipologia di sella più congeniale alle proprie esigenze.

Selle San Marco non solo è in grado di offrire l'opzione giusta per ogni tipologia ergonomica, ma dispone anche degli strumenti adatti per analizzare le caratteristiche fisiche di ogni utente e indirizzare così al meglio la scelta, secondo questi parametri:

- larghezza della sella (Wide o Narrow)
- presenza o meno del foro centrale e la sua ampiezza



Same user, same conditions but with different saddles will generate different pressure maps

Stesso utente, stesse condizioni ma pedalando con selle diverse genera mappe di pressione differenti















Never buy the wrong saddle again with the **idmatch® Smart Caliper**

Choosing a saddle is one of the most complex issues that cyclists face. Thanks to the special caliper designed for Selle San Marco, i.e. "idmatch Smart Caliper," the ideal saddle can be identified in just three quick, intuitive steps, in the user's presence. The tool's internal algorithm analyses the obtained anthropometric data in order to produce a result: intertrochanteric distance, thigh diameter and pelvis rotation.

code: 000000000146 Smart Caliper

La scelta della sella è una delle questioni più complesse che deve affrontare un ciclista. Grazie a uno speciale calibro sviluppato per Selle San Marco e chiamato "idmatch Smart Caliper", è possibile individuare la tipologia di sella ideale in soli tre passaggi veloci e intuitivi, in presenza dell'utente. L'algoritmo interno allo strumento infatti tiene conto dei dati antropometrici che vengono rilevati: distanza intertrocanterica, diametro delle cosce e rotazione del bacino.

Codice: 000000000146 Smart Caliper

SIZE CHART	 NARROW	 WIDE
 S1 <small>idmatch</small>  L1 <small>idmatch</small>		
 S2 <small>idmatch</small>  L2 <small>idmatch</small>		
 S3 <small>idmatch</small>  L3 <small>idmatch</small>	<i>Shortfit</i> <i>Aspide Short</i> <i>Ground</i>	<i>Shortfit</i> <i>Aspide Short</i> <i>Allroad</i> <i>Ground</i>

idmatch®
SMART CALIPER

1° STEP

Intertrochanteric distance

The distance between the two major femur tuberosities is measured and then combined with step 2, in order to identify the most suitable saddle width (narrow or wide).

Questa misurazione della distanza tra le due grandi tuberosità del femore combinata con lo step 2, permette di definire quale sia la larghezza della sella più congeniale (Narrow o Wide)



2° STEP

Thighs diameter

The diameter of both thighs is measured and then combined with the step 1 measurement, in order to identify the most suitable saddle width (narrow or wide).

La misurazione del diametro di entrambe le cosce, combinata con la misurazione dello step 1, permette di definire quale è la larghezza della sella più congeniale (Narrow o Wide)

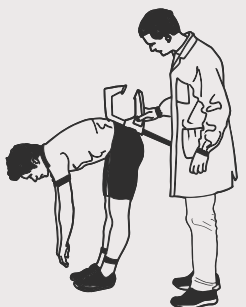


3° STEP

Pelvis rotation

This operation allows the pelvis rotation to be measured, in order to identify whether the user requires a Full-Fit or Open-Fit saddle, in addition to the size of the cut-out, if applicable. The higher the rotation, the greater the pressure on the soft tissue and therefore, the wider the cut-out must be for optimal relief.

Questa operazione consente di misurare la rotazione del bacino e di conseguenza individuare se l'utente necessita di una sella Full-Fit o Open-Fit ed eventualmente definirne la dimensione del foro stesso. Maggiore la rotazione, maggiore la pressione sui tessuti molli e più largo dovrà essere il foro per uno scarico ottimale.



Watch the video tutorial here that explains the features and how to use the Smart Caliper and ask your local retailer for information on where you can have this tool.

Scopri qui il video tutorial sulle caratteristiche e modalità di utilizzo dello Smart Caliper e richiedi al tuo agente di zona come averlo.

For more information visit idmatch.cc

Cover



MICROFEEL SUPERLIGHT

Special lowered thickness treatment microfiber material, abrasion resistant, weather resistant, perspirant. Great touch and feel. Long lasting and durable. Easy to wash & clean.

Speciale materiale in microfibra a spessore ribassato, resistente alle abrasioni, resistente agli agenti atmosferici, traspirante. Gradevole al tatto. Durevole e resistente. Facile da lavare e pulire.



MICROFEEL

Microfiber material, abrasion resistant, weather resistant, perspirant. Great touch and feel. Long lasting and durable. Easy to wash & clean.

Materiale in microfibra, resistente alle abrasioni, resistente agli agenti atmosferici, traspirante. Gradevole al tatto. Durevole e resistente. Facile da lavare e pulire.



SILKFEEL

Silk-soft-touch surface finish, bi-elastic strut material, waterproof and with good abrasive resistance. Easy to wash & clean.

Finitura al tatto morbida e setosa, materiale bi-elastico rinforzato, impermeabile e con buona resistenza all'abrasione. Facile da lavare e pulire.



WOVEN

Special Microfiber material, shock resistant, weather resistant. Tough touch and abrasion protective. Long lasting and durable. Easy to wash & clean.

Speciale materiale in microfibra, resistente agli urti, resistente agli agenti atmosferici. Forte al tatto e protettivo contro le abrasioni. Durevole e resistente. Facile da lavare e pulire.

Shell



FULL CARBON

Handmade with the best high quality modulus unidirectional carbon fiber material, linked to engineering research on shape and structure that guarantee uncompromising lightness and performances. The synthesis of years of experience, research and excellent craftsmanship.

Fatto a mano con materiale di alta qualità in fibra di carbonio unidirezionale di altissimo livello, legato alla ricerca ingegneristica su forma e struttura che garantiscono leggerezza e performance senza compromessi. La sintesi di anni di esperienza, ricerca ed eccellente artigianalità.



CARBON FIBER REINFORCED

High-performance nylon, enhanced with carbon fibres, built with variable thickness, reinforcements by ribs and bridges, which enhance the rigidity with ergonomics and durability characteristics, without affecting weight to the shell.

Nylon ad alte prestazioni, arricchito con fibre in carbonio, costruito con spessori variabili, rinforzato con nervature che ne aumentano la rigidità con caratteristiche ergonomiche e di durata, senza compromettere il peso della struttura.



GLASS FIBER REINFORCED

Techno-polymer: engineering polymer with high physical and mechanical characteristics (rigidity, toughness, ductility) that allow it cope with static and dynamic loads and ageing.

Techno-polymer: polimero per ingegneria dotato di elevata caratteristica fisico-meccanica (rigidità, tenacità, duttilità) tale da ben sopportare sia carichi statici e dinamici che di invecchiamento.

Padding



PEXFOAM

HI performance, Ultra-light innovative material with variable thickness and exceptional shape memory. Unmatched energy return. Stability vs low/high temperatures. Biocompatible.

Altamente performante, materiale innovativo ultraleggero con spessori variabili e memoria di forma eccezionale. Ritorno d'energia imbattibile. Stabilità rispetto alle temperature basse/alte. Biocompatibile.



BIOFOAM

Biodynamic low density foam with variable thickness structure that follows the movements of the pelvis when pedalling, for guaranteed comfort, light weight, long lasting resistance and ideal support.

Schiuma biodinamica a bassa densità con struttura di spessore variabile che segue i movimenti del bacino durante la pedalata, per un comfort garantito, leggerezza, resistenza di lunga durata e supporto ideale.



PULLFOAM

Low density foam with variable thickness structure that follows the movements of the pelvis when pedaling, for guaranteed comfort, long lasting resistance and ideal support.

Schiuma a bassa densità con struttura di spessore variabile che segue i movimenti del bacino durante la pedalata, per un comfort garantito, resistenza di lunga durata e supporto ideale.



GEL

High density Silicon Gel structure that provide the best comfort to the pelvis bones when pedalling, for guaranteed comfort and ideal support, absorbing all road vibrations.

Struttura in gel siliconico ad alta densità che offre il massimo comfort alle ossa del bacino durante la pedalata, comfort garantito e supporto ideale grazie all'assorbimento delle vibrazioni della strada.



SUPERCOMFORT

Improved, thicker padding (Biofoam Plus) featuring variable density to better guarantee a comfortable posture while riding. The central opening has been increased to lend maximum relief from perineal pressure while at the same time maintaining a sufficient area of support.

Suitable for E-Bikes.

Imbottitura con spessore maggiorato e strato di Gel (Biofoam Plus) e a densità variabile per meglio garantire un appoggio confortevole durante la pedalata. Massimizzazione del foro centrale per garantire un'ottimale sollievo della pressione sul perineo e, allo stesso tempo, mantenere un'area di supporto adeguata.

Adatta per E-Bikes



COMFORT

Increased cushioning (Extra Padding) to ensure more comfortable support when pedalling. The central opening has been increased to ensure optimal pressure relief from the perineal area while at the same time maintaining a sufficient support surface.

Imbottitura maggiorata (Extra Padding) per garantire un appoggio più confortevole durante la pedalata. Massimizzazione del foro centrale per garantire uno scarico ottimale della pressione dalla zona perineale e, allo stesso tempo, mantenere un'area di supporto adeguata.

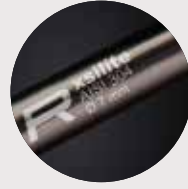
Rail



C carbon fiber
hs composite
Ø 9,8x7 mm



R xsilite
AISI 304
Ø 7 mm



CFX - CARBON FIBER

Superlight full carbon fiber rails with oval section (9,8 mm x 7 mm) with PATENTED DNA (Dynamic Node Action) technology which prevents twisting and keeps the front of the saddle narrow for great pedalling freedom. It makes the Carbon fiber rails even stiffer and, give to the central geometry a longer section to ensure more extensive saddle adjustment. This Rails is used on Superleggera and Carbon FX saddles. An adaptor might be required with some seat posts.

Telaio superleggero completamente in carbonio con sezione ovale (9,8 mm x 7 mm) e Brevetto DNA (Dynamic Node Action), tecnologia che impedisce la torsione e mantiene la parte anteriore della sella più stretta per un ottima libertà di pedalata. DNA rende il telaio in fibra di carbonio ancora più rigido, conferendo alla geometria centrale una sezione più lunga per assicurare alla sella una regolazione più ampia. Questo telaio viene utilizzato sulle selle Superleggera e Carbon FX. Potrebbe essere necessario un adattatore per alcuni reggisella.

- LEGGEREZZA / LIGHTNESS
- RIGIDITÀ / RIGIDITY
- DURATA / DURATION

RACING - XSILITE

AiSi304 Stainless Steel hollow rails (outer Ø 7 mm - inner Ø 5 mm) Very Light, resistant, and tough against all weather condition. A special production process guarantees excellent fatigue resistance. All Racing level saddles have a Xsilite Rails.

Telaio AiSi304 in tubo di Acciaio Inossidabile (esterno Ø 7 mm - interno Ø 5 mm). Molto leggero, forte e resistente a tutte le condizioni atmosferiche. Uno speciale processo di produzione garantisce ottima resistenza alla fatica. Tutte le selle di livello Racing hanno telaio Xsilite.

- LEGGEREZZA / LIGHTNESS
- RIGIDITÀ / RIGIDITY
- DURATA / DURATION

D manganese
25CrMo4
Ø 7 mm



S carbon steel
Fec Alloy
Ø 7 mm



DYNAMIC - MANGANESE

High-tech hollow Chromoly rails (outer Ø 7 mm - inner Ø 4 mm) + external painting, light and resistant. All Dynamic saddles have Manganese Rails.

Telaio in tubo Chromoly high tech (esterno Ø 7 mm - interno Ø 4 mm) verniciatura esterna, leggera e resistente. Tutte le selle Dynamic hanno telaio in Manganese.

- LEGGEREZZA / LIGHTNESS
- RIGIDITÀ / RIGIDITY
- DURATA / DURATION

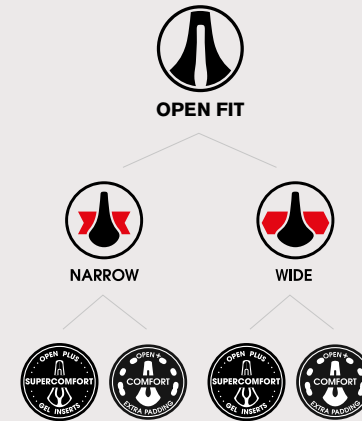
CARBON STEEL

C45 "Reinforced" full steel frame (diameter 07mm) with external paint, light and resistant. All "Sport" saddles have Carbon Steel Rails. Telaio in acciaio pieno C45 "Reinforced" (diametro 07mm) con verniciatura esterna, leggera e resistente. Tutte le selle "Sport" hanno telaio in Carbon Steel.

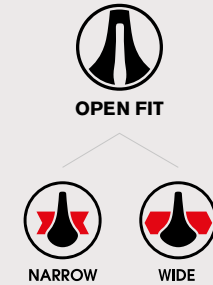
- LEGGEREZZA / LIGHTNESS
- RIGIDITÀ / RIGIDITY
- DURATA / DURATION

Categories

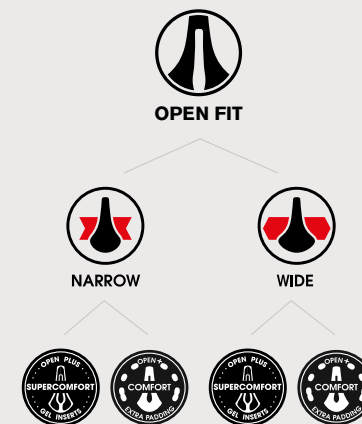
Shortfit



Aspide



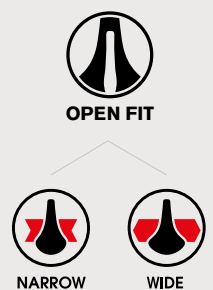
Aspide Short



Allroad



Ground



Shortfit

- ROAD
- GRAVEL/TOURING
- MTB (XC to Enduro)

Aspide

- ROAD
- GRAVEL/TOURING
- MTB (XC to Enduro)

Aspide Short

- ROAD
- GRAVEL/TOURING
- MTB (XC to Enduro)

Allroad

- ROAD
- GRAVEL/TOURING
- MTB (XC to Enduro)

Ground

- ROAD
- GRAVEL/TOURING
- MTB (XC to Enduro)

#amatterofriders



Shortfit 2.0

The Shortfit model is the most aggressive saddle in the collection. It is distinguished by its short length and maximised central cut-out. The excellent, generous rear support makes this model ideal for those athletes who rotate their pelvis a lot whilst pedalling and as a result, move closer towards the handlebars. Its technical structure makes it particularly suitable for road use.

Il modello Shortfit è il più aggressivo della collezione, caratterizzato dalla sua lunghezza ridotta, abbinata ad un foro centrale massimizzato. Ottimo e generoso il supporto posteriore che rende questo modello ideale per quegli atleti che durante la pedalata ruotano molto con il bacino portandosi in posizione ravvicinata al manubrio. Per la sua struttura tecnica è particolarmente indicata per utilizzo strada.

●●●●● ROAD
 ●●○○○ GRAVEL/TOURING
 ●●○○○ MTB (XC to Enduro)



Shortfit 2.0 3D Carbon FX

CODE	COLOUR	SIZE	COVER	PADDING	SHELL	RAIL
287WW801	Black	WIDE L3 - 155mm	Microfeel	Biofoam	Carbon Fiber reinforced	Carbon Fiber ø 9,8x7mm
287WN801	Black	NARROW S3 - 140mm				



Shortfit Superleggera

CODE	COLOUR	SIZE	WEIGHT	COVER	PADDING	SHELL	RAIL
276WW401	Black	WIDE L3 - 144mm	125gr	Microfeel Superlight	Pexfoam	Full Carbon	Carbon Fiber ø 9,8x7mm



Shortfit 2.0 3D Racing

CODE	COLOUR	SIZE	COVER	PADDING	SHELL	RAIL
287LW801	Black	WIDE L3 - 155mm	Microfeel	Biofoam	Carbon Fiber reinforced	Xsilite ø 7mm
287LN801	Black	NARROW S3 - 140mm				



Shortfit 2.0 Carbon FX

CODE	COLOUR	SIZE	WEIGHT	COVER	PADDING	SHELL	RAIL
287WW401	Black	WIDE L3 - 155mm	190gr	Microfeel	Biofoam	Carbon Fiber reinforced	Carbon Fiber ø 9,8x7mm
287WN401	Black	NARROW S3 - 140mm	185gr				



Shortfit 2.0 Racing Iridescent Gold

CODE	COLOUR	SIZE	WEIGHT	COVER	PADDING	SHELL	RAIL
287LW703	Iridescent Gold	WIDE L3 - 155mm	215gr	Microfeel	Biofoam	Carbon Fiber reinforced	Xsilite ø 7mm
287LN703	Iridescent Gold	NARROW S3 - 140mm	210gr				



Shortfit 2.0 Dynamic

CODE	COLOUR	SIZE	WEIGHT	COVER	PADDING	SHELL	RAIL
287MW701	Black	WIDE L3 - 155mm	285gr	Silkfeel	Pullfoam	Carbon Fiber reinforced	Manganese ø 7mm
287MN701	Black	NARROW S3 - 140mm	280gr				



Shortfit 2.0 Racing

CODE	COLOUR	SIZE	WEIGHT	COVER	PADDING	SHELL	RAIL
287LW701	Black	WIDE L3 - 155mm	215gr	Microfeel	Biofoam	Carbon Fiber reinforced	Xsilite ø 7mm
287LN701	Black	NARROW S3 - 140mm	210gr				



Shortfit 2.0 Sport

CODE	COLOUR	SIZE	WEIGHT	COVER	PADDING	SHELL	RAIL
287CW701	Black	WIDE L3 - 155mm	320gr	Silkfeel	Pullfoam	Glass Fiber reinforced	Carbon Fiber ø 9,8x7mm
287CN701	Black	NARROW S3 - 140mm	315gr				





Shortfit 2.0 Supercomfort Racing

CODE	COLOUR	SIZE	WEIGHT	COVER	PADDING	SHELL	RAIL
291LW701	Black	WIDE L3 - 155mm	245gr	Microfeel	Biofoam Plus	Carbon Fiber reinforced	Xsilite ø 7mm
291LN701	Black	NARROW S3 - 140mm	240gr				



Shortfit 2.0 Comfort Dynamic

CODE	COLOUR	SIZE	WEIGHT	COVER	PADDING	SHELL	RAIL
291MW701	Black	WIDE L3 - 155mm	295gr	Silkfeel	Pullfoam Plus	Glass Fiber Reinforced	Manganese ø 7mm
291MN701	Black	NARROW S3 - 140mm	290gr				



#amatterofriders



Aspide

Aspide is perhaps the all-time best known model from the Selle San Marco collection. Its clean, minimalist line guarantees excellent comfort and even more lightness. The very slim front guarantees excellent leg freedom whilst pedalling. The good rear support helps maintain the riding position. Aspide is particularly suited to road use, yet also offers excellent performance on other types of terrain.

Storicamente Aspide è forse il modello più conosciuto della collezione Selle San Marco. La sua linea pulita e minimalista garantisce un ottimo comfort e ancor più leggerezza. La parte anteriore molto slanciata garantisce un'ottima libertà alle gambe mentre si pedala. Buono il supporto posteriore che aiuta a mantenere la posizione in sella. Aspide è particolarmente apprezzata su strada, ma offre ottime prestazioni anche su altri tipi di terreni.

●●●●● ROAD
 ●○○○○ GRAVEL/TOURING
 ●●○○○ MTB (XC to Enduro)



Aspide Superleggera

CODE	COLOUR	SIZE	WEIGHT	COVER	PADDING	SHELL	RAIL
900WW401	Black	WIDE L2 - 141mm	111gr	Microfeel Superlight	Pexfoam	Full Carbon	Carbon Fiber ø 9,8x7mm
900WN401	Black	NARROW S2 - 131mm	109gr	Microfeel Superlight	Pexfoam	Full Carbon	Carbon Fiber ø 9,8x7mm



Aspide Racing

CODE	COLOUR	SIZE	WEIGHT	COVER	PADDING	SHELL	RAIL
901LW401	Black	WIDE L2 - 142mm	180gr	Microfeel	Biofoam	Carbon Fiber Reinforced	Xsilite ø 7mm
901LN401	Black	NARROW S2 - 132mm	177gr	Microfeel	Biofoam	Carbon Fiber Reinforced	Xsilite ø 7mm
901LN403	White	NARROW S2 - 132mm	177gr	Microfeel	Biofoam	Carbon Fiber Reinforced	Xsilite ø 7mm



Aspide Carbon FX

CODE	COLOUR	SIZE	WEIGHT	COVER	PADDING	SHELL	RAIL
901WW401	Black	WIDE L2 - 142mm	150gr	Microfeel	Biofoam	Carbon Fiber Reinforced	Carbon Fiber ø 9,8x7mm
901WN401	Black	NARROW S2 - 132mm	145gr	Microfeel	Biofoam	Carbon Fiber Reinforced	Carbon Fiber ø 9,8x7mm



Aspide Dynamic

CODE	COLOUR	SIZE	WEIGHT	COVER	PADDING	SHELL	RAIL
901MW401	Black	WIDE L2 - 142mm	215gr	Microfeel	Biofoam	Carbon Fiber Reinforced	Manganese ø 7mm
901MN401	Black	NARROW S2 - 132mm	210gr	Microfeel	Biofoam	Carbon Fiber Reinforced	Manganese ø 7mm





Aspide Short Carbon FX

CODE	COLOUR	SIZE	WEIGHT	COVER	PADDING	SHELL	RAIL
911WW401	Black	WIDE L3 - 155mm	155gr	Microfeel	Biofoam	Carbon Fiber Reinforced	Carbon Fiber ø 9,8x7mm
911WN401	Black	NARROW S3 - 139mm	150gr				



Aspide Short Racing

CODE	COLOUR	SIZE	WEIGHT	COVER	PADDING	SHELL	RAIL
911LW401	Black	WIDE L3 - 155mm	190gr	Microfeel	Biofoam	Carbon Fiber reinforced	Xsilite ø 7mm
911LN401	Black	NARROW S3 - 140mm	210gr				



Aspide Short Racing Iridescent Gold

CODE	COLOUR	SIZE	WEIGHT	COVER	PADDING	SHELL	RAIL
911LW403	Iridescent Gold	WIDE L3 - 155mm	190gr	Microfeel	Biofoam	Carbon Fiber reinforced	Xsilite ø 7mm
911LN403	Iridescent Gold	NARROW S3 - 140mm	210gr				



Aspide Short Dynamic

CODE	COLOUR	SIZE	WEIGHT	COVER	PADDING	SHELL	RAIL
911MW401	Black	WIDE L3 - 155mm	220gr	Silkfeel	Pullfoam	Carbon Fiber Reinforced	Manganese ø 7mm
911MN401	Black	NARROW S3 - 139mm	215gr				





Aspide Short Sport

CODE	COLOUR	SIZE	WEIGHT	COVER	PADDING	SHELL	RAIL
911CW401	Black	WIDE L3 - 155mm	270gr	Silkfeel	Pullfoam	Carbon Fiber Reinforced	Carbon Steel ø 7mm
911CN401	Black	NARROW S3 - 139mm	265gr	Silkfeel	Pullfoam	Carbon Fiber Reinforced	Carbon Steel ø 7mm



Aspide Short Comfort Dynamic

CODE	COLOUR	SIZE	WEIGHT	COVER	PADDING	SHELL	RAIL
913MW001	Black	WIDE L3 - 155mm	242gr	Silkfeel	Pullfoam Plus	Carbon Fiber Reinforced	Manganese ø 7mm
913MN001	Black	NARROW S3 - 140mm	238gr	Silkfeel	Pullfoam Plus	Carbon Fiber Reinforced	Manganese ø 7mm



Aspide Short Supercomfort Racing

CODE	COLOUR	SIZE	WEIGHT	COVER	PADDING	SHELL	RAIL
913LW001	Black	WIDE L3 - 155mm	223gr	Microfeel	Biofoam Plus	Carbon Fiber Reinforced	Xsilite ø 7mm
913LN001	Black	NARROW S3 - 140mm	220gr	Microfeel	Biofoam Plus	Carbon Fiber Reinforced	Xsilite ø 7mm



#amatterofriders



Allroad

Allroad has been designed to be a versatile saddle that can be used on various terrains, such as the modern gravel applications. Allroad combines the successful ergonomic lines of the Aspide model with more generous padding solutions from the off-road world. This winning combination also includes all aspects of cover protection needed for Gravel use.

Allroad è stata pensata per essere una sella polivalente, utilizzabile nei vari terreni proprio come le moderne applicazioni Gravel. Allroad unisce le vincenti linee ergonomiche di Aspide con soluzioni di imbottitura più generose del mondo Off-Road. Combinazione vincente unita alle necessarie caratteristiche di protezione della copertura nell'utilizzo Gravel.

●●●○ ROAD
 ●●●● GRAVEL/TOURING
 ●●●○ MTB (XC to Enduro)



Allroad Carbon FX

CODE	COLOUR	SIZE	WEIGHT	COVER	PADDING	SHELL	RAIL
720WW401	Black	WIDE L3 - 146mm	147gr	Microfeel	Biofoam	Carbon Fiber Reinforced	Carbon Fiber ø 9,8x7mm



Allroad Dynamic

CODE	COLOUR	SIZE	WEIGHT	COVER	PADDING	SHELL	RAIL
720MW401	Black	WIDE L3 - 146mm	200gr	Microfeel	Biofoam	Carbon Fiber Reinforced	Manganese ø 7mm



Allroad Racing

CODE	COLOUR	SIZE	WEIGHT	COVER	PADDING	SHELL	RAIL
720LW401	Black	WIDE L3 - 146mm	175gr	Microfeel	Biofoam	Carbon Fiber Reinforced	Xsilite ø 7mm



New colour



New colour



Allroad Supercomfort

CODE	COLOUR	SIZE	WEIGHT	COVER	PADDING	SHELL	RAIL
723LW001	Black	WIDE L3 - 146mm	213gr	Microfeel	Biofoam Plus	Carbon Fiber Reinforced	Xsilite ø 7mm
723LW003	Ice Gray						
723LW005	Desert Sage						



#amatterofriders



Ground

Designed and conceived for those who enjoy adventure on all types of surfaces, the Ground ensures maximum comfort without neglecting performance. Its compact shape helps to easily find and maintain the ideal seating position while its rear ensures excellent ischial support. The central cut-out increase the feeling of comfort also on uneven terrain.

Progettata e realizzata per coloro che amano l'avventura su tutte le tipologie di superfici, la Ground assicura il massimo comfort senza trascurare le prestazioni. La sua forma compatta aiuta a trovare e mantenere facilmente la posizione di seduta ideale mentre la sua parte posteriore assicura un eccellente supporto ischiatico. Il foro centrale aumenta la sensazione di comfort anche su terreni sconnessi.

- ○ ○ ○ ○ ROAD
- ● ● ○ ○ GRAVEL/TOURING
- ● ● ● ● MTB (XC to Enduro)



Ground Carbon FX

CODE	COLOUR	SIZE	WEIGHT	COVER	PADDING	SHELL	RAIL
322WW401	Black	WIDE L3 - 155mm	182gr	Silkfeel	Pullfoam	Carbon Fiber reinforced	Carbon Fiber ø 9,8x7mm
322WN401	Black	NARROW S3 - 140mm	177gr	Silkfeel	Pullfoam	Carbon Fiber reinforced	Carbon Fiber ø 9,8x7mm



Ground Sport

CODE	COLOUR	SIZE	WEIGHT	COVER	PADDING	SHELL	RAIL
322CW701	Black	WIDE L3 - 155mm	324gr	Silkfeel	Pullfoam	Glass Fiber reinforced	Manganese ø 7mm
322CN701	Black	NARROW S3 - 140mm	319gr	Silkfeel	Pullfoam	Glass Fiber reinforced	Manganese ø 7mm



Ground Dynamic

CODE	COLOUR	SIZE	WEIGHT	COVER	PADDING	SHELL	RAIL
322MW701	Black	WIDE L3 - 155mm	276gr	Silkfeel	Pullfoam	Glass Fiber reinforced	Xsilite ø 7mm
322MN701	Black	NARROW S3 - 140mm	271gr	Silkfeel	Pullfoam	Glass Fiber reinforced	Xsilite ø 7mm





Bottega

BOTTEGA represents the product line where the most famous saddles in the world can express their charm and where style becomes form. Very high attention to detail, materials and available finishes. The result of over 80 years' experience, capable of adapting and turning its historical icons into benchmarks for the modern world.

BOTTEGA rappresenta la linea di prodotto dove le selle più famose nel mondo possono esprimere al massimo il loro fascino e dove lo stile diventa forma. Altissima attenzione al dettaglio, ai materiali utilizzati e alle finiture proposte. Il risultato di un'esperienza lunga oltre 80 anni, capace di trasformare ed adattare le icone storiche in punti di riferimento del modo attuale.

SELLE SAN MARCO

 BOTTEGA

Regal

concor

Regal^{EV2}

Rolls



Regal Evo Racing le Classiche

CODE	DIMENSIONS	WEIGHT	COVER	RAIL	COLOUR
499L089	152 x 278mm	230gr	Smooth Leather	Xsilite	Black



Rolls le Classiche

CODE	DIMENSIONS	WEIGHT	COVER	RAIL	COLOUR
490T019	143 x 282mm	302gr	Smooth Leather	Titanio	Black



Regal le Classiche

CODE	DIMENSIONS	WEIGHT	COVER	RAIL	COLOUR
495C075	149 x 283mm	380gr	Smooth Leather	Carbon Steel Silver colour	Black





Regal le Rino

CODE	DIMENSIONS	WEIGHT	COVER	RAIL	COLOUR
495C001	149 x 283mm	380gr	Rino Leather	Carbon Steel Copper colour	Black



Concor Supercorsa le Rino

CODE	DIMENSIONS	WEIGHT	COVER	RAIL	COLOUR
267C121	140 x 265mm	300gr	Rino Leather	Carbon Steel Gold colour	Black



Rolls le Rino

CODE	DIMENSIONS	WEIGHT	COVER	RAIL	COLOUR
490C001	143 x 282mm	382gr	Rino Leather	Carbon Steel Gold colour	Black



Bioaktive

Bioaktive is a successful line of saddles anatomically designed to suit every style of riding. It benefits of the elaborate experience and heritage of selle san marco, an italian company that produces handmade bicycle saddles since 1935. Premium materials, high technology solutions and dedicated features make each bioaktive saddles unique. The need to simplify the choice for the perfect saddle resulted in a range designed according to riding style: sportive, trekking or city.

Bioaktive è il marchio di una completa gamma di prodotti, che beneficia del know-how di un produttore storico con oltre ottant'anni di esperienza nel settore, l'azienda italiana Selle San Marco. La filosofia Bioaktive FA NASCERE DEI PRODOTTI confortevoli e dal design originale, progettati per adattarsi anatomicamente ad ogni TIPOLOGIA DI UTENTE. La necessità di semplificare il processo di scelta della sella giusta, ha DEFINITO TRE STILI DI PEDALATA: **SPORTIVE, TREKKING E CITY.**

BIOAKTIVE
HUMAN COMFORT

Cover



BIOFOAM

A challenge: a lighter product with greater durability. Our biofoam padding delivers both. Biofoam's structure is compliant with the movements of the pelvis during pedaling. It reduces saddle weight and guarantees comfort and durability. The "closed cell" surface ensures the saddle will be water-repellent.

Una sfida: peso inferiore e maggiore resistenza nel tempo. L'imbottitura Biofoam è la nostra risposta per una sella molto morbida e leggera. Questo grazie anche alla struttura biodinamica, che segue i movimenti del bacino durante la pedalata. Lo strato superficiale a "celle chiuse" garantisce l'idrorepellenza dell'imbottitura e consente di non trattenere il calore derivante dall'esposizione al sole e di non causare la fuoriuscita di materiale in caso di rottura.



OPEN

The open system is the result of clinical tests and ongoing anatomical research. The feature consists of a gradual opening in the saddle to ensure a total comfort and relief in the perineal area.

Degli speciali e mirati inserti in Gel biocompatibile all'interno dell'imbottitura assicurano l'attenuazione della pressione in corrispondenza delle zone più delicate e offrono protezione dagli urti accidentali.



GEL

These Bioactive saddles are provided with specific gel inserts placed under the protective cover. Their function is to reduce the impact of shocks on sensitive points.

Degli speciali e mirati inserti in Gel biocompatibile all'interno dell'imbottitura assicurano l'attenuazione della pressione in corrispondenza delle zone più delicate e offrono protezione dagli urti accidentali.



REFLECTIVE

Two reflective lines enrich the new design of four new products. A special consideration for safety and visibility. Simple reflective details on front and rear for riding in low-light conditions to keep the rider visible on the roads all day long.

Degli speciali e mirati inserti in Gel biocompatibile all'interno dell'imbottitura assicurano l'attenuazione della pressione in corrispondenza delle zone più delicate e offrono protezione dagli urti accidentali.

Technology and Experience.

Comfort and a unique style are the foundations on our saddles, a complete range of technologically advanced that provides extreme comfort for every riding style. All the experience of Selle San Marco with an original design.

Comfort e uno stile unico sono le basi su cui nascono le nostre selle, una gamma completa tecnologicamente all'avanguardia che garantisce estrema comodità per ogni stile di pedalata. Tutta l'esperienza selle San Marco con un design originale.

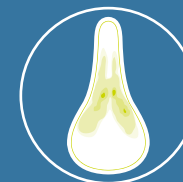
#amatterofriders



Sportive

For those who use the bike for exercise. Riders who want a perfect balance of comfort and performance will get the ideal solution in this category. A saddle that is suitable for mountainbikers, road racers and trekking riders.

Chi cerca il mix perfetto tra massimo comfort e prestazioni eccellenti, troverà in questa categoria la soluzione ideale. Selle studiate per chi pedala in una posizione performante.. Ottimale sia per chi usa bici da strada, che mountain bike.



Front weight distribution

These products have been developed for mountain-bike, road, and trekking riders who ride with weight distribution is toward the front of the saddle.

Perfetta combinazione di comfort e prestazioni ottimali. Questa categoria, offre la soluzione ideale per percorsi sia "road" che "offroad".



Sportive Small Open-Fit Gel

CODE	COLOUR	SIZE	WEIGHT
065CS701	Black	S1 - 150mm	357gr



Sportive Small Gel

CODE	COLOUR	SIZE	WEIGHT
069CS003	Black	S1 - 150mm	340gr



Sportive Large Gel

CODE	COLOUR	SIZE	WEIGHT
067CL003	Black	L1 - 250mm	370gr



Sportive Small Open-Fit

CODE	COLOUR	SIZE	WEIGHT
065CS001	Black	S2 - 254mm	310gr



Sportive Large

CODE	COLOUR	SIZE	WEIGHT
061CL001	Black	L1 - 170mm	350gr



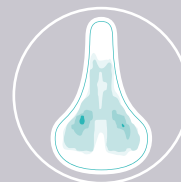
#amatterofriders



Trekking

The key word: relaxed. This section is for those who ride for leisure and give priority to comfort. Here you'll find saddles designed specifically for leisure riders and urban commuters.

Parola d'ordine: relax. Per chi usa la bicicletta nel tempo libero per divertirsi e rilassarsi, o per spostarsi in modo rapido nelle strade cittadine. Ecco le selle ideali sia per gli amanti del trekking, sia per chi si muove in città.



Center weight distribution

The weight distribution is placed in the center of the saddle due to pelvis rotation. This is the category to consider if you are looking for an all-day comfort on a city or trekking bike.

Distribuzione del peso più centrale sulla sella dovuta alla ridotta rotazione del bacino per un "all-day comfort" su una city-bike o trekking, questa è la categoria da consultare.



Trekking Large Open-Fit Gel

CODE	COLOUR	SIZE	WEIGHT
242CL703	Black	L2 - 188mm	460gr



Trekking Large Gel

CODE	COLOUR	SIZE	WEIGHT
248CL003	Black	L1 - 196mm	450gr



Trekking Small Open-Fit Gel

CODE	COLOUR	SIZE	WEIGHT
789CS703	Black	S2 - 175mm	425gr



Trekking Small Gel

CODE	COLOUR	SIZE	WEIGHT
782CS003	Black	S1 - 164mm	400gr



Trekking Large Open-Fit

CODE	COLOUR	SIZE	WEIGHT
242CL003	Black	L2 - 188mm	415gr



Trekking Large

CODE	COLOUR	SIZE	WEIGHT
245CL001	Black	L1 - 188mm	440gr



Trekking Small Open-Fit

CODE	COLOUR	SIZE	WEIGHT
789CS003	Black	S2 - 175mm	385gr

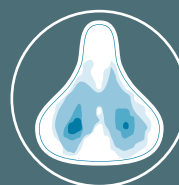
#amatterofriders



City

Riding everyday on city roads has never been so pleasant! Choose a saddle from this category to ensure compliant biodynamics that follow the movements of pelvis during pedaling from a more upright position.

Usare la bicicletta quotidianamente per spostarsi in città non è mai stato così piacevole. Chi sceglie le selle di questa linea sa di affidarsi a prodotti con sedute anatomicamente confortevoli, molto ampie, per un comfort estremo. Adatte anche per il Touring.



Rear weight distribution

The weight distribution is concentrated in the rear of the saddle as the cyclist sits upright. Saddles placed in this category allow their riders to keep a comfortable upright riding position and do not limit the pelvis movements during the ride because of their biodynamic.

La distribuzione del peso è più verso la parte posteriore della sella, per la posizione eretta del ciclista. Le selle di questa categoria consentono una posizione eretta, pur rispettando la funzione biodinamica del bacino durante la pedalata. Queste selle sono indicate anche per i percorsi di cicloturismo e trekking.



City Large Gel

CODE	COLOUR	SIZE	WEIGHT
283CL003	Black	L1 - 220mm	540gr



City Large

CODE	COLOUR	SIZE	WEIGHT
286CL001	Black	L1 - 220mm	530gr



City Small Gel

CODE	COLOUR	SIZE	WEIGHT
192CS003	Black	S1 - 220mm	510gr



City Sofa

CODE	COLOUR	SIZE	WEIGHT
046C011	Black	L1 - 275mm	905gr

#amatterofriders



Accessories

Selle San Marco accessories: everything you need to ride in comfort and safety, thanks to the Presa Supercomfort Kit. Without forgetting style, the various colors of the handlebar tapes and the Presa Corsa Iridescent are proof of this. The Test Saddles allows the cyclist to try the saddle on the road before making the purchase.

Gli accessori di Selle San Marco: tutto ciò che serve per pedalare in comodità e sicurezza, grazie a Presa Supercomfort Kit. Senza tralasciare lo stile, le varie colorazioni dei nastri manubrio e il Presa Corsa Iridescent ne sono una prova. Le Selle Test inoltre, permettono al ciclista di provare la sella su strada prima di effettuare l'acquisto.



New colour

Presa Corsa Iridescent

CODE	COLOUR	DIMENSION
T024M	Iridescent	200x3cm
T026M	Iridescent Gold	



Presa Corsa Dynamic

CODE	COLOUR	MATERIAL	DIMENSION
T003M	Black		
T004M	White	EVA + gel	200x3cm
T005M	Red		



Presa XC2 Racing

CODE	COLOUR	MATERIAL	DIMENSION
G85003	Black	Light foam	W31x L135mm



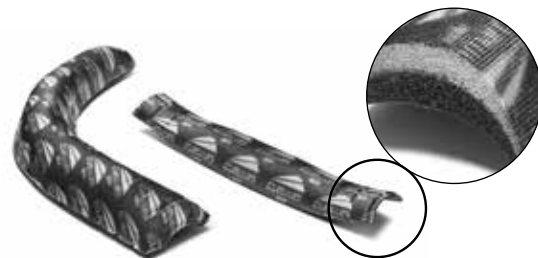
Presa Corsa Team

CODE	COLOUR	MATERIAL	DIMENSION
T020M	Black		
T021M	White	WET PU + gel	200x3cm
T026M	Iridescent gold		



Presa XC Racing

CODE	COLOUR	MATERIAL	DIMENSION
G850001	Black	Light foam + lock ring	W31x L130mm



Presa Supercomfort Kit

kit composed by tapes (15mm height) and padding (dual density biofoam + gel insert)

CODE
T059 S

Test Saddles

Selle San Marco lets users find the right products by providing test saddles in-store that also indicate the BRP on the cover. In order to make the BRP easier to understand, Selle San Marco indicates the distance between the tip of the saddle and the BRP on its main models.

Selle San Marco offre agli utenti la possibilità di trovare la propria sella ideale attraverso le selle test che riportano anche l'indicazione BRP sulla grafica della cover. Per facilitare la definizione del BRP, Selle San Marco indica per i suoi modelli principali la distanza tra la punta della sella e il BRP stesso.

CODE	DESCRIPTION
287MWBWP1	SHORTFIT 2.0 Open-Fit Wide - TEST
287MNBWP1	SHORTFIT 2.0 Open-Fit Narrow - TEST
291LWBWP1	SHORTFIT 2.0 Supercomfort Open-Fit Wide - TEST
291LNBP1	SHORTFIT 2.0 Supercomfort Open-Fit Narrow - TEST
913LWBWP	ASPIDE SHORT Supercomfort Open-Fit Wide - TEST
913LNBP	ASPIDE SHORT Supercomfort Open-Fit Narrow - TEST
322MWBWP1	GROUND Open Fit Wide - TEST
322MNBWP1	GROUND Open Fit Narrow - TEST
911LWBWP	ASPIDE SHORT Open-Fit Wide - TEST
911LNBP	ASPIDE SHORT Open-Fit Narrow - TEST
903LWBWP	ASPIDE Supercomfort Gel Open-Fit Wide - TEST
903LN015D	ASPIDE Supercomfort Gel Open-Fit Narrow - TEST
901LWBWP	ASPIDE Open-Fit Wide - TEST
901LN015D	ASPIDE Open-Fit Narrow - TEST
902LW015D	ASPIDE Full-Fit Wide - TEST
902LN015D	ASPIDE Full-Fit Narrow - TEST
720LWBWP	ALLROAD Open-Fit Wide - TEST
324LNBP	GND Open-Fit Narrow TEST
720LWBWP	ALLROAD Open-Fit Wide TEST



Test saddle Bag

The carrying bag is composed of two modules (every single module could contain 4 saddles)

CODE
BAG008





Bottega Leather Tape

CODE	DIMENSIONS	WEIGHT	COVER	COLOUR
T001P	200 x 3 cm	92gr	Smooth Leather	Black



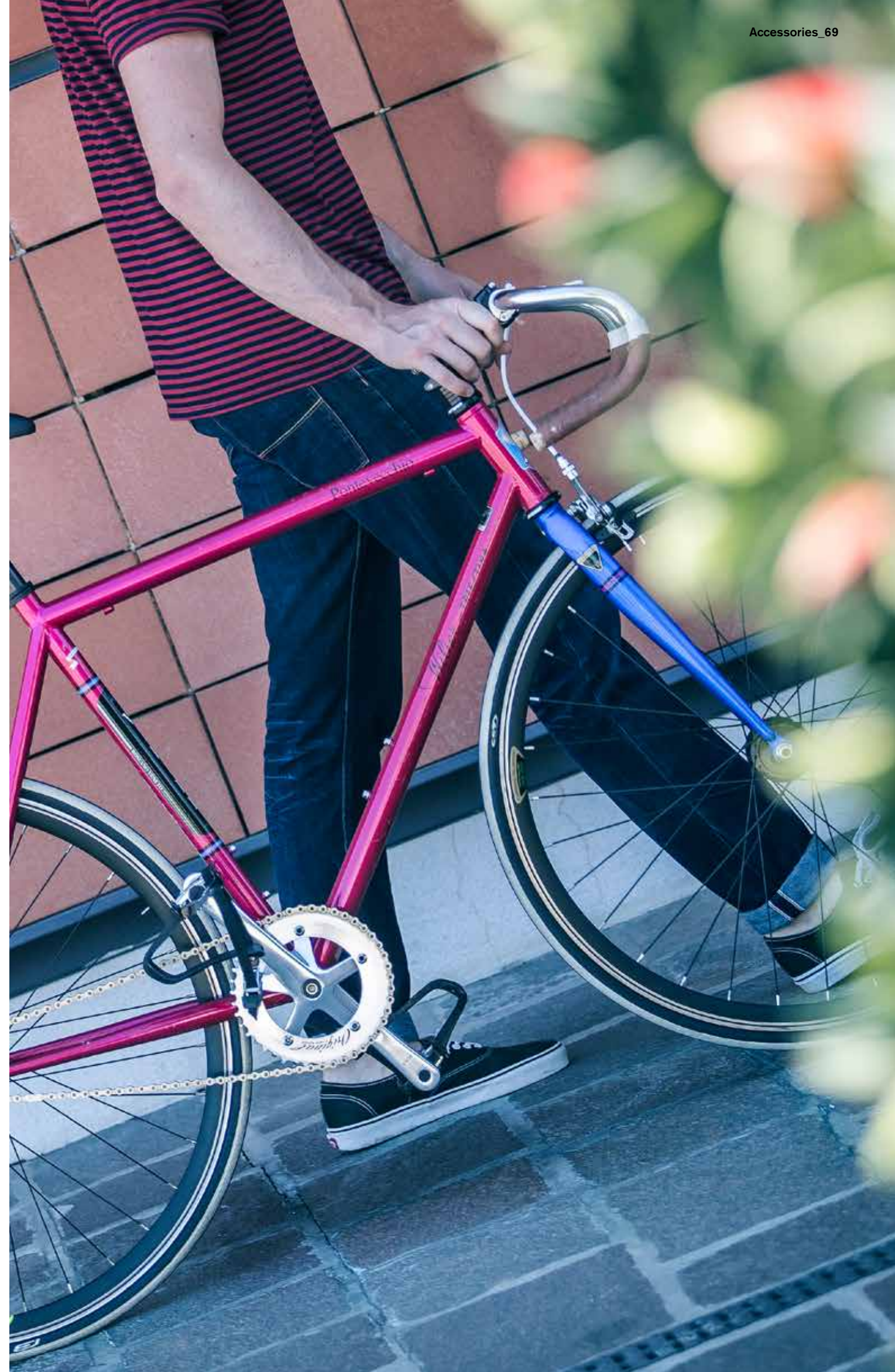
Bottega Leather Tape

CODE	DIMENSIONS	WEIGHT	COVER	COLOUR
T002P	200 x 3 cm	92gr	Smooth Leather	White



Bottega Leather Tape

CODE	DIMENSIONS	WEIGHT	COVER	COLOUR
T007P	200 x 3 cm	92gr	Smooth Leather	Light brown



Sales information:
 Selle Italia S.r.l.
 Via E. Fermi, 2
 31011 Casella d'Asolo (TV) Italy
 tel +39 0423 54 13 13
 fax +39 0423 54 13 00

welcome@selleitalia.com

Photo
 Rad Race

Concept:
 Jonnymole.com

Learn more:
 www.sellesanmarco.com

Follow us:
 facebook.com/sellesanmarco
 instagram.com/sellesanmarco

The photos in this catalogue reflect
 the brand standard and are provided
 for illustrative purposes only.

Tutte le immagini sono inserite a scopo illustrativo.
 I prodotti possono subire modifiche.

© 2023 sellesanmarco

CODE	NAME	TECHNOLOGY	IDMATCH	DIMENSION	WEIGHT	RAIL	COVER	EAN CODE
276WW401	SHORTFIT Superleggera Wide	Superleggera	L3	W 144 x L 250 mm	125	Carbon DNA	Microfeel	8009456012522
287WW801	SHORTFIT 2.0 3D Carbon FX Wide	Carbon FX	L3	W 155 x L 255 mm		Carbon DNA	3D Printed	8030282541337
287WN801	SHORTFIT 2.0 3D Carbon FX Narrow	Carbon FX	S3	W 140 x L 255 mm		Carbon DNA	3D Printed	8030282541375
287WW401	SHORTFIT 2.0 Carbon Fx Wide	Carbon FX	L3	W 155 x L 255 mm	190	Carbon DNA	Microfeel	8030282528758
287WN401	SHORTFIT 2.0 Carbon Fx Narrow	Carbon FX	S3	W 140 x L 255 mm	185	Carbon DNA	Microfeel	8030282528772
287LW801	SHORTFIT 2.0 3D Racing Wide	Racing	L3	W 155 x L 255 mm		Xsilite	3D Printed	8030282541399
287LN801	SHORTFIT 2.0 3D Racing Narrow	Racing	S3	W 140 x L 255 mm		Xsilite	3D Printed	8030282541405
287LW701	SHORTFIT 2.0 Racing Wide	Racing	L3	W 155 x L 255 mm	215	Xsilite	Microfeel	8030282539907
287LN701	SHORTFIT 2.0 Racing Narrow	Racing	S3	W 140 x L 255 mm	210	Xsilite	Microfeel	8030282539914
287LW703	SHORTFIT 2.0 Racing Wide Iridescent Gold	Racing	L3	W 155 x L 255 mm	215	Xsilite	Microfeel	8030282541085
287LN703	SHORTFIT 2.0 Racing Narrow Iridescent Gold	Racing	S3	W 140 x L 255 mm	210	Xsilite	Microfeel	8030282541092
291LW701	SHORTFIT 2.0 Supercomfort Racing Wide	Racing	L3	W 155 x L 255 mm	245	Xsilite	Microfeel	8030282539921
291LN701	SHORTFIT 2.0 Supercomfort Racing Narrow	Racing	S3	W 140 x L 255 mm	240	Xsilite	Microfeel	8030282539938
291MW701	SHORTFIT 2.0 Comfort Dynamic Wide	Dynamic	L3	W 155 x L 255 mm	295	Manganese	Silkfeel	8030282539983
291MN701	SHORTFIT 2.0 Comfort Dynamic Narrow	Dynamic	S3	W 140 x L 255 mm	290	Manganese	Silkfeel	8030282540026
287MW701	SHORTFIT 2.0 Dynamic Wide	Dynamic	L3	W 155 x L 255 mm	285	Manganese	Silkfeel	8030282540088
287MN701	SHORTFIT 2.0 Dynamic Narrow	Dynamic	S3	W 140 x L 255 mm	280	Manganese	Silkfeel	8030282540118
287CW701	SHORTFIT 2.0 Sport Wide	Sport	L3	W 155 x L 255 mm	320	Carbon Steel	Silkfeel	8030282540422
287CN701	SHORTFIT 2.0 Sport Narrow	Sport	S3	W 140 x L 255 mm	315	Carbon Steel	Silkfeel	8030282540453
911WW401	ASPIDE Short Carbon FX Wide	Carbon FX	L3	W 155 x L 250 mm	155	Carbon DNA	Microfeel	8009456110174
900WW401	ASPIDE Superleggera Wide	Superleggera	L2	W 141 x L 278 mm	111	Carbon DNA	Microfeel	8009456030359
900WN401	ASPIDE Superleggera Narrow	Superleggera	S2	W 131 x L 278 mm	109	Carbon DNA	Microfeel	8009456030288
911WN401	ASPIDE Short Carbon FX Narrow	Carbon FX	S3	W 139 x L 250 mm	150	Carbon DNA	Microfeel	8009456110181
901WW401	ASPIDE Carbon FX Wide	Carbon FX	L2	W 142 x L 277 mm	150	Carbon DNA	Microfeel	8009456032315
901WN401	ASPIDE Carbon FX Narrow	Carbon FX	S2	W 132 x L 277 mm	145	Carbon DNA	Microfeel	8009456032162
913LW001	ASPIDE Short Supercomfort Wide	Racing	L3	W 155 x L 250 mm	223	Xsilite	Microfeel	8030282524729
913LN001	ASPIDE Short Supercomfort Narrow	Racing	S3	W 140 x L 250 mm	220	Xsilite	Microfeel	8030282524736
911LW401	ASPIDE Short Racing Wide	Racing	L3	W 155 x L 250 mm	190	Xsilite	Microfeel	8009456110198
911LN401	ASPIDE Short Racing Narrow	Racing	S3	W 139 x L 250 mm	185	Xsilite	Microfeel	8009456110204
911LW403	ASPIDE Short Racing Wide Iridescent Gold	Racing	L3	W 155 x L 250 mm	190	Xsilite	Microfeel	8030282541139
911LN403	ASPIDE Short Racing Narrow Iridescent Gold	Racing	S3	W 139 x L 250 mm	185	Xsilite	Microfeel	8030282541146
901LW401	ASPIDE Racing Wide	Racing	L2	W 142 x L 277 mm	180	Xsilite	Microfeel	8009456031301
901LN401	ASPIDE Racing Narrow	Racing	S2	W 132 x L 277 mm	177	Xsilite	Microfeel	8009456030892
901LN403	ASPIDE Racing Narrow White	Racing	S2	W 132 x L 277 mm	177	Xsilite	Microfeel	8009456030915
913MW001	ASPIDE Short Comfort Dynamic Wide	Dynamic	L3	W 155 x L 250 mm	285	Manganese	Silkfeel	8030282529199
913MN001	ASPIDE Short Comfort Dynamic Narrow	Dynamic	S3	W 140 x L 250 mm	280	Manganese	Silkfeel	8030282529212
911MW401	ASPIDE Short Dynamic Wide	Dynamic	L3	W 155 x L 250 mm	220	Manganese	Silkfeel	8009456110211
911MN401	ASPIDE Short Dynamic Narrow	Dynamic	S3	W 139 x L 250 mm	215	Manganese	Silkfeel	8009456110228
901MW401	ASPIDE Dynamic Wide	Dynamic	L2	W 142 x L 277 mm	215	Manganese	Microfeel	8009456031769
901MN401	ASPIDE Dynamic Narrow	Dynamic	S2	W 132 x L 277 mm	210	Manganese	Microfeel	8009456031691
911CW401	ASPIDE Short Sport Wide	Sport	L3	W 155 x L 250 mm	270	Carbon Steel	Silkfeel	8009456110235
911CN401	ASPIDE Short Sport Narrow	Sport	S3	W 139 x L 250 mm	265	Carbon Steel	Silkfeel	8009456110242
720WW401	ALLROAD Carbon FX Wide	Carbon FX	L3	W 146 x L 268 mm	147	Carbon DNA	Microfeel	8009456024648
723LW001	ALLROAD Supercomfort Racing Wide	Racing	L3	W 146 x L 268 mm	213	Xsilite	Microfeel	8030282524712
723LW003	ALLROAD Supercomfort Racing Wide Ice Gray	Racing	L3	W 146 x L 268 mm	213	Xsilite	Microfeel	8030282541009
723LW005	ALLROAD Supercomfort Racing Wide Desert Sage	Racing	L3	W 146 x L 268 mm	213	Xsilite	Microfeel	8030282541078
720LW401	ALLROAD Racing Wide	Racing	L3	W 146 x L 268 mm	175	Xsilite	Microfeel	8009456024600
720MW401	ALLROAD Dynamic Wide	Dynamic	L3	W 146 x L 268 mm	200	Manganese	Microfeel	8009456024617
322WW401	GROUND Carbon FX Wide	Carbon FX	L3	W 155 x L 255 mm	182	Carbon DNA	Silkfeel	8030282524743
322WN401	GROUND Carbon FX Narrow	Carbon FX	S3	W 140 x L 255 mm	177	Carbon DNA	Silkfeel	8030282524750
322MW701	GROUND Dynamic Wide	Dynamic	L3	W 155 x L 255 mm	276	Manganese	Silkfeel	8030282540187
322MN701	GROUND Dynamic Narrow	Dynamic	S3	W 140 x L 255 mm	271	Manganese	Silkfeel	8030282540217
322CW701	GROUND Sport Wide	Sport	L3	W 155 x L 255 mm	324	Fec Alloy	Silkfeel	8030282540248
322CN701	GROUND Sport Narrow	Sport	S3	W 140 x L 255 mm	319	Fec Alloy	Silkfeel	8030282540279
267C121	CONCOR SC Le Rino	Bottega	L1	W 140 x L 265 mm	300	Carbon Steel / gold	Rino Leather	8009456012058
490T019	ROLLS Le Classiche	Bottega	L1	W 143 x L 282 mm	302	Titanio	Smooth Leather	8009456021210
490C001	ROLLS Le Rino	Bottega	L1	W 143 x L 282 mm	382	Carbon Steel / gold	Rino Leather	8009456674850
495C001	REGAL Le Rino	Bottega	L1	W 149 x L 283 mm	380	Carbon Steel / copper	Rino Leather	8009456668538
495C075	REGAL Le Classiche	Bottega	L1	W 149 x L 283 mm	380	Carbon Steel / silver	Smooth Leather	8009456021500
499L089	REGAL EVO Racing Le Classiche	Bottega	L1	W 152 x L 278 mm	230	Xsilite	Smooth Leather	8009456022668
065CS701	Sportive Small Open-Fit Gel	Bioaktive		W 151 x L 254 mm	357	Carbon Steel	Softfeel Reflector	8030282526082
067CL003	Sportive Large Gel	Bioaktive		W 170 x L 250 mm	370	Carbon Steel	Softfeel	8009456009195
069CS003	Sportive Small Gel	Bioaktive		W 150 x L 270 mm	340	Carbon Steel	Softfeel	8009456009348
065CS001	Sportive Small Open-Fit	Bioaktive		W 151 x L 254 mm	310	Carbon Steel	Matt Reflector	8009456009089
061CL001	Sportive Large	Bioaktive		W 170 x L 250 mm	350	Carbon Steel	Matt	8009456008396
242CL703	Trekking Large Open-Fit Gel	Bioaktive		W 188 x L 273 mm	460	Carbon Steel	Softfeel Reflector	8009456011150
789CS703	Trekking Small Open-Fit Gel	Bioaktive		W 175 x L 269 mm	425	Carbon Steel	Softfeel Reflector	8009456027120
248CL003	Trekking Large Gel	Bioaktive		W 196 x L 265 mm	450	Carbon Steel	Softfeel Reflector	8009456011501
782CS003	Trekking Small Gel	Bioaktive		W 164 x L 277 mm	400	Carbon Steel	Softfeel Reflector	8009456026888
242CL003	Trekking Large Open-Fit	Bioaktive		W 188 x L 273 mm	415	Carbon Steel	Matt Reflector	8009456011099
789CS003	Trekking Small Open-Fit	Bioaktive		W 175 x L 269 mm	385	Carbon Steel	Matt Reflector	8009456027052
245CL001	Trekking Large	Bioaktive		W 188 x L 273 mm	440	Carbon Steel	Matt Reflector	8009456011266
283CL003	City Large Gel	Bioaktive		W 220 x L 269 mm	540	Carbon Steel	Softfeel Reflector	8009456017343
192CS003	City Small Gel	Bioaktive		W 220 x L 269 mm	510	Carbon Steel	Softfeel Reflector	8009456009935
286CL001	City Large	Bioaktive		W 220 x L 269 mm	530	Carbon Steel	Matt Reflector	8009456017442
046C011	City Sofa	Bioaktive		W 275 x L 300 mm	905	Carbon Steel	Matt	8009456110433

selle
sanmarco

The logo consists of the brand name 'selle sanmarco' in a stylized font. 'selle' is in a smaller, italicized font above 'sanmarco', which is in a larger, bold, italicized font. Below the text is a graphic element consisting of a blue swoosh above a black swoosh, both pointing to the right.

sellesanmarco.com